



**League of Women Voters  
Of  
Los Angeles**

**ANNUAL MEETING**

**Saturday, June 17, 2006**

**Los Angeles City Hall  
Bradley Tower, 27<sup>th</sup> floor  
200 North Spring Street  
Los Angeles 90012**

LEAGUE OF WOMEN VOTERS OF LOS ANGELES  
3250 Wilshire Blvd., Suite 1005, Los Angeles, CA 90010  
P: 213-368-1616; F: 213-368-1615; e-mail: [info@lwvlosangeles.org](mailto:info@lwvlosangeles.org)  
Website: [www.lwvlosangeles.org](http://www.lwvlosangeles.org)

**ANNUAL MEETING**

**SATURDAY, JUNE 17, 2006**

**TABLE OF CONTENTS**

Agenda.....	1
Rules of the Day.....	2
Registration.....	2
Map and Directions.....	3
Adopted Program: 2005–2007.....	4
Positions in Brief.....	5 & 6
Treasurer’s Report 2006.....	7
Proposed Budget for Fiscal Year 2006-2007..... (call office to request copy)	8 & 9
Report of the Nominating Committee.....	10

**ANNUAL MEETING – SATURDAY, JUNE 17, 2006**

**Los Angeles City Hall  
Bradley Tower ~ 27<sup>th</sup> Floor  
200 N. Spring St.  
9:00 a.m. – 11:30 p.m.  
Lunch & Speaker to follow**

**A G E N D A**

9:00 a.m.	Registration and Coffee	
9:30	Call to Order	
	Introduction of Parliamentarian	Nancy Arnheim
	Introduction of Secretary	Margie Engel
	Appointment of Minutes Reading Committee	
	Appointment of Timekeeper	
	Credentials Report	
	Adoption of Agenda	
	Adoption of Rules of the Day	
9:40	Report of the Treasurer	Bertha Sutton
9:45	Report of the Administrative Director	Ellen Glettner
9:55	Report of the Education Fund	
10:05	Presentation of Budget	
10:15	Presentation of Program: update	Jean Thomson
10:35	State of the League Address	Liza White
10:40	Adoption of Budget	
10:50	Nomination/Election of Officers & Directors	Cindy O'Connor
11:05	Directions to the Board	
11:25	Adjournment	
12:00 noon	<b>Lunch</b>	
12:30 p.m.	<b>Guest Speaker:</b> Senator Alan Lowenthal and others: TOPIC: Legislative Update on Key Issues	

LEAGUE OF WOMEN VOTERS OF LOS ANGELES  
3250 Wilshire Blvd., Suite 1005, Los Angeles, CA 90010

**Please bring this kit to Annual Meeting**

**June 17, 2006**

**ANNUAL MEETING**

**9:00 a.m.**

**RULES OF THE DAY**

(To be adopted at the opening of the meeting.  
A simple majority is required for adoption.)

Each subject speaker shall be limited to two (2) minutes.

Everyone who wishes to speak on a given subject shall have an opportunity to do so before anyone else may speak a second time on the same matter.

Extension of the business session shall be voted by a majority decision of those present.

All motions must be written and sent to the platform by a page.

Any non-recommended item which is presented for consideration shall be allowed a two-minute presentation by its proponents. Voting consideration will follow presentation of all items.

Consideration of a non-recommended item requires a simple majority vote; adoption of a non-recommended item requires a two-third vote.

..... Please tear off and mail with check by Thursday, June 1, 2006-----

**REGISTRATION FORM - ANNUAL MEETING - JUNE 17, 2006**

**Name(s):** \_\_\_\_\_ **Phone ( )** \_\_\_\_\_

**Address** \_\_\_\_\_ **City** \_\_\_\_\_

**No. Reservations** \_\_\_\_\_ **@ \$35.00**      **Total Reservation Fees \$** \_\_\_\_\_

**REQUIRED BY CITY HALL: Auto License Plate#** \_\_\_\_\_

**Color/Make/Model** \_\_\_\_\_

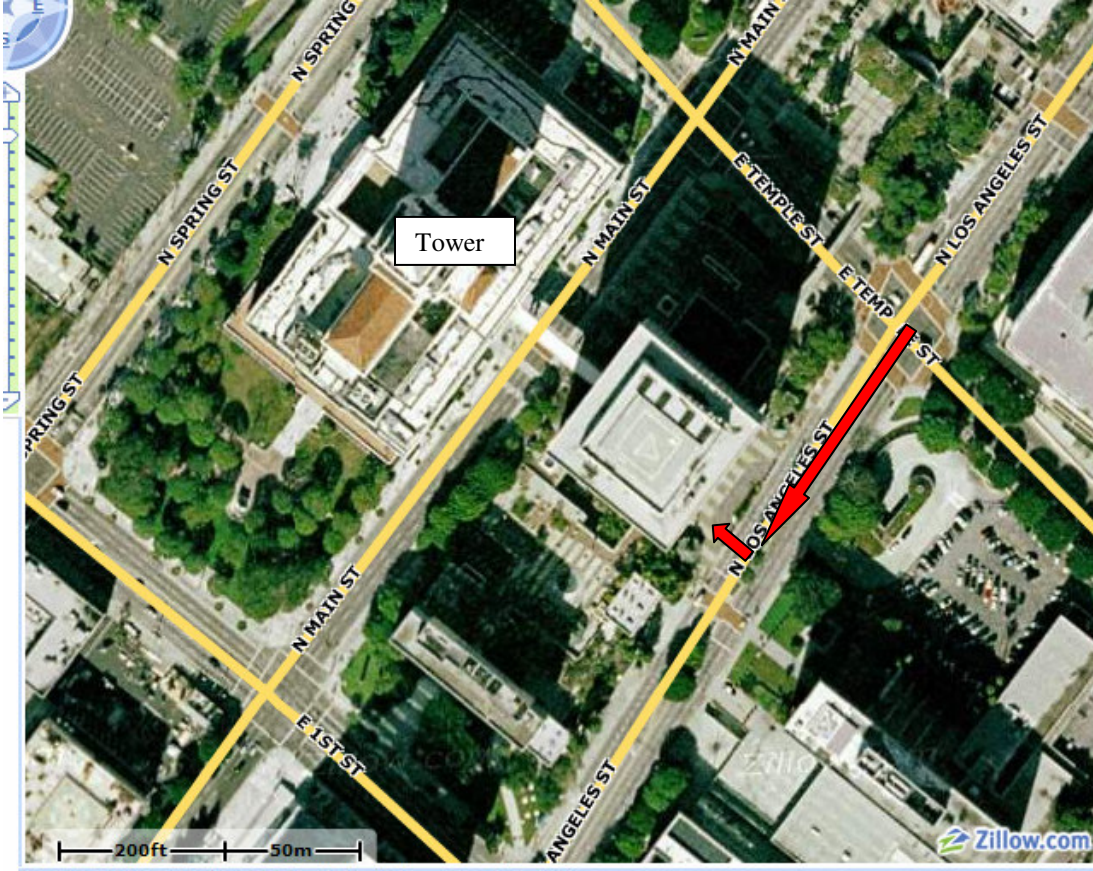
**Passenger Names:** \_\_\_\_\_

Make check payable to LWVLA and send with form to LWVLA, 3250 Wilshire Blvd., Suite 1005, Los Angeles, CA 90010.

Free parking will be provided at City Hall **only** for meeting attendees who have registered with their automobile identification. Please call our office at 2313-368-1616. (Map and directions on back.)

Facilities are wheelchair accessible (several elevators)

## Directions to City Hall And Parking Instructions



To reach City Hall from the North, take the 101 freeway, exit on Los Angeles Street.  
From the South, take the 110 freeway, exit on Temple.

The Parking Structure is open only from the Los Angeles Street side. You must be identified at the kiosk there and will be directed to drive underground through to P2 (western side). Take elevator to the main floor, then change to the elevators (in the next bank) which go to the 23<sup>rd</sup> floor, then change to the elevators (in the next bank) which go to the 26<sup>th</sup> floor. From there you may use the stairs to the banquet hall or use the elevator in the next bank which goes directly to the 27<sup>th</sup> floor.

If taking public transportation, the entrance is on Main Street (200 No. Main St.).

### **Adopted Program 2005-2007**

Every two years the members of LWVLA vote to determine the issues the League will focus on in order to create, modify, or use its positions. This is called the League's "adopted program." For 2005-2007 LWVLA voted to retain all previous positions and to focus its efforts on the following:

#### **STUDY 2005-2007:**

The membership approved a study of city government financing.

#### **UPDATE POSITIONS 2005-2007:**

**EDUCATION:** The membership approved the board's recommendation for a possible update. The board will appoint a committee to review the results of the new LWVC Education Update/Study and determine whether the current LWVLA position on education should be updated. If the committee recommends an update and the board concurs, then an update/study will be undertaken.

**COMMUNITY COLLEGE:** The membership approved the board's recommendation for a possible update. The board will appoint a committee to evaluate whether our Community College System Position adopted in 1997 needs to be updated in light of both the 2003 LWVC Community College System position as well as information gleaned from three forums held in April, 2005.

#### **CONTINUING POSITIONS FOR ACTION AND/OR EMPHASIS 2005-2007:**

The voting rights of ex-felons was an issue for emphasis during 2004-2005 as a citizen education topic. Voting rights of ex-felons was retained as an issue for emphasis on which LWVLA will work with League of Women Voters/Los Angeles County for 2005-2007.

## Positions In Brief

**2005-2007**

The full text of LWVLA's positions is available from the office or at the web site ([www.LWVLosangeles.org](http://www.LWVLosangeles.org); click on Action) in PDF format.

**CABLE TELEVISION (1984, 1997)** Support for city guarantees and enforcement of provisions for local and citywide public, education and government access channels.

**CHILD CARE (1985)** Support for a publicly subsidized child care program available to parents at all income levels with fees on a sliding scale.

**CITY GOVERNMENT (1964, 1976, 1977, 1980, 1994-1999)** Support of measures that would sustain a balance of power between the Mayor and the City Council, strengthen direct lines of authority, and fix responsibility in City administration.

**CIVIL SERVICE (1977)** Support of measures that will reduce all barriers to the employment or promotion of a person except those based on merit.

**COMMUNITY COLLEGE DISTRICT (1997)** Support of the Los Angeles Community College District (LACCD) in its role as an essential part of public education in meeting the needs of the Los Angeles community.

**EDUCATION (1966, 1971, 1976, 1977, 1981, 1993-1995)** Support of a public school system which meets the needs of our community and whose primary goal is the achievement of quality education and an openness to educational change.

**HOMELESSNESS (1986-87)** Support of the City having a responsibility to provide shelter for the homeless people and to seek long-term solutions to their problems by cooperating with other levels of government and the private sector.

**HOUSING (1967, 1980)** Support of measures which lead to equality of opportunity for adequate housing.

**LIBRARY (1975, 1977, 1981)** Support of measures that will ensure adequate financing of the Los Angeles Public Library Department.

**OPEN SPACE, RECREATION AND PARKS (1971)** Support for the acquisition, preservation and maintenance of open space, with emphasis on adequate financing at all levels of government.

LWVLA – Annual Meeting – June 17, 2006

**PLANNING (1961, 1967, 1972, 1979, 1989)** Support of effective city planning and a land-use policy protecting the quality of life for everyone.

**POLICE (1978, 1992)** Support of the Police Commission in its charter-given role as head of the Police Department, and its ability to remove the Chief of Police with concurrence of the Mayor and City Council.

**SECESSION (2001)** Support of all efforts to improve services and responsiveness to the diverse voices of many communities in the City of Los Angeles. Los Angeles should continue as one city.

**TRANSIT (1984, 2001)** Support of transportation policies and practices that facilitate: coordination among transportation agencies to assure efficient intra-county movement; public/private partnership to provide DASH-type and/or shuttle systems within city neighborhoods; placement of transit stops in safe, well-lighted locations.

**VOTING RIGHTS (1980)** Support of election procedures which enable citizens to carry out their rights and duties as voters.

**WASTE MANAGEMENT (1972)** Support of measures to promote reuse of materials, measures to encourage research and development in waste management, and measures to ensure that completed landfills are used for open space only.

**WASTEWATER MANAGEMENT (1991)** Support of mandatory use of reclaimed water in major new developments, diversity in sludge management methods, and feasible and reasonable treatment of dry weather flows from some major storm drains.



**TREASURER’S REPORT FOR 2006-2007 ANNUAL MEETING**

The fiscal year for LWVLA is from July 1 through June 30. Since the Annual Meeting occurs before the end of the fiscal year, an eleven-month interim financial report will be distributed at that meeting. The report will cover the period July 1, 2005 through May 31, 2006.

A monthly treasurer’s report is given at each Board meeting and is always filed with the minutes. A copy is available to any member who requests one.

Within four months after the close of the fiscal year, a full annual financial report is distributed to every member via the VOTER.

However, this year the full annual financial report was not completed by the League’s outside accountant until April, 2006. Therefore it is being distributed in the May VOTER.

## Nominating Committee Report

### OFFICERS

2 <sup>nd</sup> VP	Frances Talbott-White	(2008)
3 <sup>rd</sup> VP	Cecilia Schlesinger	(2008) (1yr only)
4 <sup>th</sup> VP	Lynn Lowry	(2008)
Secretary	Anne Reisinger	(2008)

### DIRECTORS

Elizabeth Ralston	(2008)
Wilma Willis	(2008)
Sandra Chen Lau	(2008)
Frances Lapides	(2007) filling out unexpired term

### NOMINATING COMMITTEE MEMBERS

Jane Goichman	(2008)
Renee Weisenberg	(2008)

\* \* \* \* \*

#### Remaining Officers:

President Liza White	(2007)
Treasurer Bertha Sutton	(2007)

#### Remaining Elected Directors:

Marilyn Albertson	(2007)
Mattie Grant	(2007)
Barbara Braunstein	(2007)

#### Remaining Nominating Committee members:

Cindy O'Connor	(2007)
Helen Terris	(2007)

#### Presented by Nominating Committee:

Barbara Vogel, Chair  
Cindy O'Connor, Vice Chair  
Helen Terris

4/17/2006

